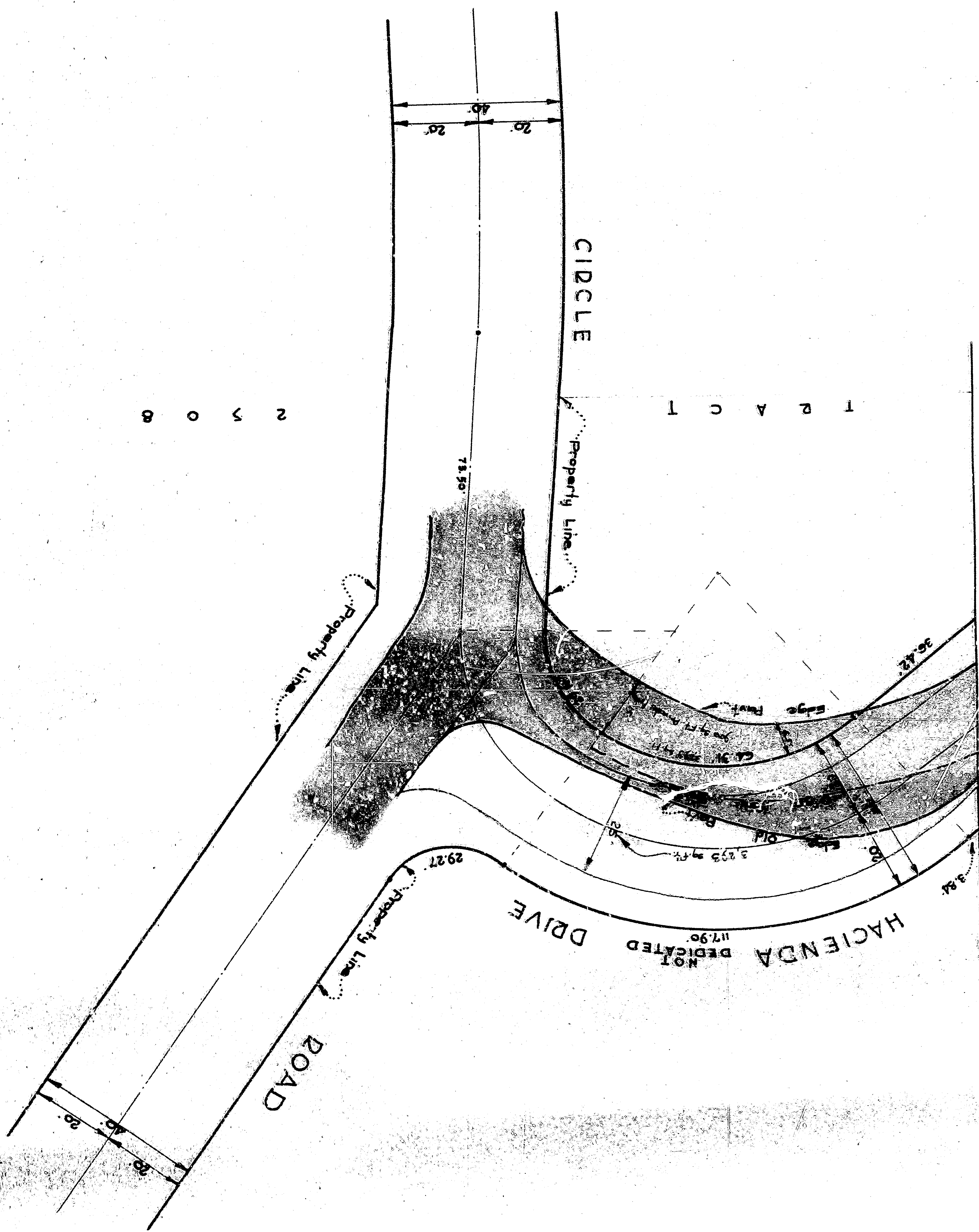


JUGUST 20, 1974

Remove 3,000 sq ft East Part @ .27¢ sq ft = \$ 810.00
Construct 5,000 sq ft New Part @ .11¢ sq ft = \$ 550.00
Total = \$ 1,360.00

DEPARTMENT OF ENGINEERING



2308

SCALE 1" = 20'